



MJM Vehicle Design and Fabrication
174 Teamtrack # 2
Auburn Ca. 95603

Phone 530 887 8297

Fax 530 887 8299

Email TomC@Foothill.net

Tomahawk Moto-Cycle Accessories is the wholesale brand name for MJM Vehicle Design and Fabrication LLC. We produce parts and accessories for Victory Motorcycles, Millennium Indian Motorcycles and V-Rod Harley Motorcycles. We have been designing and manufacturing motorcycle parts and accessories since 1999.

Our 2007 Victory Accessories Catalog contains about 7-dozen parts, which is about twice the offering of our first catalog, published two years ago. We try to design and manufacture parts for each Victory model as Polaris releases it. We should have Vision products available in a couple of months.

We have had to increase our wholesale and retail pricing effective 8-01-07. Our material and transportation costs have increased 20% in the last 2 years. Our vender and subcontractor costs have also increased over the last 2 years and we can no longer absorb these price increases. We will honor any orders placed prior to August 1st at our current pricing. During the month of August we will also extend a 10% discount on all products ordered with a quantity of 3 or more.

Our part numbering scheme begins with the 2003 Vegas. We prototyped our first parts on the Vegas. Each part or accessory that also fit the Kingpin (such as the sissy bar and engine covers) maintained the Vegas part number starting with VVG. Any unique Kingpin part we designed starts with VKP. Like the Kingpin, any unique Hammer parts and accessories we have designed starts with VHM and as would follow any unique Jackpot parts begin with VJP.

Our attached dealer price list attempts to sort out which parts fit which models. The covers that fit all models are designated All. The parts that fit Vegas and Kingpin are designated VK. Victory has made engine changes with the 100 cubic inch motor and had made a swing arm change in the 2006 Vegas / Kingpin which now is used on all 2007 models.

All of our products are warranted and will be repaired or replaced for any defects. Products can be returned for any reason – however if there is no problem with the part we will not refund shipping costs or fees associated with credit card charges..

We have made available a 2007 Color Catalog that can be downloaded from our web site, www.TomahawkMoto-Cycle.com. Also available on the web site are additional parts and accessories photographs as well as our Installation Instructions. Should you have any questions please feel free to call us at 530 887 8297. We expect to have parts and accessories for the new Victory Vision, so check our web site often.



VHMSB05



VGSM04



VVGSM04-M

SISSY BARS

All Tomahawk sissy bar receivers are constructed with 3/16th inch plate steel. Our receiver bullets are milled from 1-inch solid stock. The sissy bar is bent from 5/8th inch solid steel stock. Our sissy bars are made to firmly support your passenger or any gear you need to carry.



VVGSP04

Quick Disconnect Hammer Sissy Bar

We produce a quick disconnect sissy bar setup for the Hammer. The sissy bar receivers, made from 10-gage steel, can be lifted off after the removal of one bolt on either side of the system. The sissy bar, made of 5/8-inch solid stock, is 12 inches tall. You will also need to order a pad or one of the optional

VHMSB05	Hammer Sissy Bar and Receivers	\$ 391.00
---------	--------------------------------	-----------

Jackpot Sissy Bar and Receivers

The Jackpot sissy bar and receivers is similar to the Hammer setup but are not quick disconnect. The Jackpot receivers will fit the Hammer models. The sissy bar receivers, made from 10-gage steel, can be lifted off after the removal of one bolt on either side of the system. The sissy bar, made of 5/8-inch solid stock, is 12 inches tall. You will also need to order a pad or one of the optional

VJPSB06	Jackpot Sissy Bar and Receivers	\$ 391.00
---------	---------------------------------	-----------

Vegas and Kingpin Sissy bar and Receivers



We offer a sissy bar and receivers for the stock two up seat and another for the Mustang two up seat. The receivers mount behind the fender trim. The sissy bar receivers, made from 10-gage steel, can be lifted off after the removal of one bolt on either side of the system. The sissy bar, made of 5/8-inch solid stock, is 12 inches tall. You will also need to order a pad or one of the optional

VVGSB04	Vegas / Kingpin Sissy Bar and Receivers	\$ 284.00
VVGSB04-M	Mustang Seat Sissy Bar and Receivers	\$ 284.00

Sissy Bar Pad

We offer our standard bar Pad (8" x 7.5") and (2) different chopper bars and pad. The chopper bars are either 12" or 16" high and come with the chopper pad (6" x 6").

VVJPSB06

VVGSP04	Sissy Bar Pad	\$ 129.00
VVGCP06-12	12" Chopper Bar and Pad	\$ 203.00
VVGCP06-16	16" Chopper Bar and Pad	\$ 203.00

(you can substitute the chopper bar and pad at time of ordering)

Sissy Bar Rack

Tomahawk offers racks for all our sissy bars. The Hammer Rack, which will also mount to the Jackpot and the Vegas rack is made with solid 5/8" steel stock. The standard racks are 12" long and 6.5" wide. We also offer a Vegas jump rack that is 6 inches long and is designed to provide support for a T-bag.

VVGBR04	Vegas / Kingpin Sissy Bar Rack	\$ 184.00
VHMBR05	Hammer / Jackpot Rack	\$ 184.00
VVGJR06	Vegas Jump Rack	\$ 147.00



Mounted Hammer or
Jackpot Sissy Bar

Prices subject to change, please call 530 887 8297 for any questions



V
V
G
R
T
0
4



V
J
P
R
T
0
6



V
H
M
R
T
0
5

Turn Signals

Rear LED Turn Signals

Tomahawk rear LED turn signals fit snugly along the bike's rear fender. Our turn signals include a mount plate, LED plate and mounting hardware. We use 24 super bright LED's in our turn signals that can be seen in the brightest sunlight. The turn signals are available in either Amber(-A) or Red (-R).

VVGRT06-A/R	(-A) Amber (-R) Red Vegas Turn Signals	\$ 310.00
VHMRT06-A/R	(-A) Amber (-R) Red Hammer Turn Signals	\$ 310.00
VJPR06-A/R	(-A) Amber (-R) Red Jackpot Turn Signals	\$ 310.00



Rear Turn Signal Universal Mount

Tomahawk offers universal turn signal mounts for all Victory Models. The mounts provide a base to mount any after market turn signal; or can be used to mount our Tomahawk mini bullet LED turn signals. (VVGBL04)

VVGTM04	Vegas Universal turn Signal Mount	\$ 86.00
VHMTM05	Hammer Universal turn Signal Mount	\$ 86.00
VJPTM06	Jackpot Universal turn Signal Mount	\$ 86.00
VKPTM04	Kingpin Universal turn Signal Mount	\$ 101.00



VKPR04

Kingpin Flush Mount Rear Turn Signals

We produce our Kingpin flush mount turn signals by embedding LED's in molded Epoxy. The turn signals maintain the sleek look of the Kingpin fender.

VKPR04	Kingpin Flush Mount Turn Signals set	\$ 136.00
--------	--------------------------------------	-----------



VVGPC04

Front LED Turn Signals

Tomahawk front super bright LED turn signals are designed to mold to the contours of all models of Victory triple trees. Once heated the flexible strips conform to the triple tree and are held in place by the automotive adhesive backing.

VVGFT07-A/R	(-A) Amber(-R) red Front Turn Signals set	\$ 120.00
-------------	-------------------------------------------	-----------

Front turn Signal Mounts



TS Mounts

We offer both center mount and swept forward mount front turn signal split collars for the 43 MM Vegas and Jackpot forks. We also offer a 53 MM center mount split collar clamp for the Kingpin and Hammer. The turn signals mounts have 3/8-16 threads that can adapted to 5/16-24 threads with our VVGAS04 adapter studs.

VVGCS04	Vegas or Jackpot Center Mount Clamps set	\$ 160.00
VVGSS04	Vegas or Jackpot Swept Mount Clamps set	\$ 160.00
VKPCS04	Kingpin or Hammer Center Mount Clamps set	\$ 160.00
VVGAS04	Adapter Studs, 5/16-24 to 3/8-16 set	\$ 36.00

Mini Bullet LED's

Tomahawk offers mini bullet LED's for either the front or rear turn signals. The LEDs have metal cases, come in Amber or you can order the optional red (VVGBO04) LED's. The Mini Bullets have 5/16-25 threads, are 3 inches long and 1-inch diameter.

VVGBL04	Mini Bullet LED's for all Models set	\$ 86.00
---------	--------------------------------------	----------

Power Converter for LED Turn Signals

Our power converter allows the LED turn signals, which draw little power, to look like 10W bulbs to the turn signal module.

VVGPC04	Power converter for all Models set	\$ 37.00
---------	------------------------------------	----------



Super bright LED's

VVGBL04 with Opt Red



VVGEC04-L & S



VVGEC04-D



VVGFP06-1



VVGFP04



VVGVS04

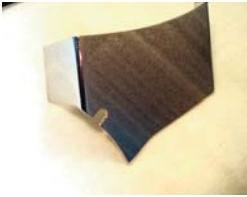


VVGSC04

Chrome Covers

Engine Covers

We offer a 180 MM engine cover, 110 MM engine cover and a Tranny filler panel (triangular indentation on the left side) all with a ball mill engraving to replace the plastic stock covers. We also have a 180 MM cover with flaming dice engraving and a Tranny filler panel with the 100 CI engraving.



VVGBC04

VVGEC04-L	180 MM Ball Mill Engraving	\$ 107.00
VVGEC04-S	110 MM Ball Mill Engraving	\$ 68.00
VVGEC06-F	180 MM Flaming Dice	\$ 125.00
VVGFP04	Filler Panel Ball Mill Engraving	\$ 55.00
VVGFP06-1	Filler Panel 100 CI Engraving	\$ 73.00

Velocity Stack and Starter Cover

The Tomahawk Velocity Stack replaces the black cover with chrome and provides increased cool airflow. Our Chrome Starter Cover is formed from 16 gage aluminum.



VVGMS04

VVGVS04	Velocity Stack for all models	\$ 214.00
VVGSC04	Starter Cover for all models	\$ 173.00

Battery Cover and Oil Filter Side Cover

Both the Battery Cover and oil Filter Side Cover are formed from 16 gage Aluminum, covering the battery box with chrome and filling the space between the swing arm and transmission.



VVKPM04

VVGBC04	Battery Cover for all models	\$ 86.00
VVGOC04	Oil Filter Cover for all models	\$ 107.00

Master Cylinder Covers

Tomahawk offers chrome Master Cylinder Covers for both the front brake and the rear breaks. Our Vegas rear master cylinder cover also fits the Hammer and Jackpot.



VVGOS04

VVGMC04-F	Front Master Cylinder Cover	\$ 59.00
VVGMC04-R	Vegas / Hammer / Jackpot Rear MC	\$ 179.00
VKPMC04	Kingpin Rear Master Cylinder	\$ 179.00

Oil Line Cover and Braided Tube

We produce stainless steel Braided Tubes with chrome fittings for the filter cooler intake and return lines. We also have a chrome Oil Line cover for the return oil line.



VVGOC04

VVGOR06	Braided Return Line for all models	\$ 221.00
VVGOS06	Braided Supply Line for all models	\$ 221.00
VVGRC06	Return Oil Line Cover for all models	\$ 107.00

Soft Bag Mounts

We produce both chrome and black powder coat soft bag mounts to protect fender paint.



VVGBM06

VVGBM06	Vegas / Kingpin Chrome Bag Mounts	\$ 175.00
VVGBM06-M	Vegas / Kingpin Powder Coat Bag Mounts	\$ 147.00
VVGHM06	Hammer / Jackpot Chrome Bag Mounts	\$ 175.00
VVGHM06-M	Hammer / Jackpot Powder Coat Bag Mounts	\$ 147.00



VKPWS04-17



VVGFP04-C



VVGRP04-I

Windscreens

Tomahawk offers both 17 inch and 21 inch Windscreens with chrome split collar mounting and 3/16-inch acrylic screens to minimize buffeting.

VVGWS04-17	Vegas / Jackpot 17" Windscreen	\$ 449.00
VVGWS04-21	Vegas / Jackpot 21" Windscreen	\$ 449.00
VVKPS04-17	Kingpin / Hammer 17" Windscreen	\$ 449.00
VVKPS04-21	Kingpin / Hammer 21" Windscreen	\$ 449.00



Foot Pegs

There are two styles of front and rear foot pegs available for all models, chromed Chopper Style and our chrome Isolation Bands style.

VVGFO4-I	Isolation Band Front foot Peg set	\$ 122.00
VVGRO4-I	Isolation Band Rear foot Peg set	\$ 122.00
VVGFO4-C	Chopper Front foot Peg set	\$ 122.00
VVGRO4-C	Chopper Rear foot Peg set	\$ 122.00

VVGLK04-1 -3



Lowering Kit

We have both a 1" and 3" Lowering Kit. The 1" works for all Models. The 3" will work for all Models but the belt guard on Hammers and Jackpots need to be modified.

VVGLK04-1	One Inch Lowering Kit	\$ 83.00
VVGLK04-3	Three Inch Lowering Kit	\$ 83.00

VHMSM04

License Plate Holder and Kingpin Tail Light Trim

We produce Vertical Side Mounts for all Models. We have a Horizontal Side Mount for the 03-04 Vegas and Kingpins. We also produce a billet Vertical Side Mount with a LED Running Light / Brake Light. Additionally we offer a lay down plate holder for the Kingpin and a trim piece to cover the mounting holes of the stock plate holder.



VVGSM04-V	03-05 Vegas / Kingpin Vertical Side Mount	\$ 234.00
VVGSM04-H	03-05 Vegas / Kingpin Horizontal Side Mount	\$ 234.00
VVGSM06	06- 07 Vegas / Kingpin and 07 Hammer / Jackpot Side Mount	\$ 234.00
VHMSM06	05-06 Hammer / Jackpot Side Mount and Ness Jackpots	\$ 234.00
VVGMB06	03-05 Vegas / Kingpin Vertical SM, Brake Light	\$ 304.00
VHMMB06	05-06 Hammer / Jackpot Vertical SM, Brake Light	\$ 304.00
VJPMB06	Ness Jackpot Side Mount with Brake Light	\$ 304.00
VKPLD04	Kingpin Lay Down plate holder	\$ 153.00
VKPTL04	Kingpin Tail Light Trim Piece	\$ 72.00

VHMMB06



Shift Rods

We currently offer replacement shift rods for all models.

VVGSR04	Vegas / Hammer / Jackpot Shift Rod	\$ 158.00
VVKPSR04	Kingpin Shift Rod	\$ 158.00

VKPSR04



VVGSE04-S



VVGSE07

Tomahawk Motorcycle Accessories 2007 Catalog

At Tomahawk we strive to produce quality parts and accessories are a fair price. Whenever possible we will over design our products for strength and durability. Our parts and accessories are TIG welded for strength as well as for esthetics. All products sold by Tomahawk are backed by our warranty and can be returned or replaced if defective.

Parts and Accessories in Development

At Tomahawk we are always developing new parts and accessories for Victory motorcycles. We have a one up rack, new side mounts 2 into 1 Exhaust, vent line cover, raked triple trees, and turn signals currently in process. Once the Vision is released we expect to develop parts for the Vision.

You are invited to visit our web sight, www.TomahawkMoto-Cycle.com to view our new products and download our new catalog when it has been updated. Dealers are invited to email us at OutlawChrome@Yahoo.com for any questions or for updated Dealer Pricing. Installation Instructions are also available for involved parts on our web site.

Exhausts and Stage One Exhaust Bracket

Tomahawk offers 3 styles of Slip On Exhausts for the 03-05 Vegas and Kingpin. We also are developing a Shot Gun full exhaust for all models available September 2007. We also offer a chromed Stage One Exhaust Bracket for all models.



VVGSE04-EL



VVGLM04

VVGSE04-EL	Equal Long Slip-ons for 03-05 Vegas and Kingpin	\$ 498.00
VVGSE04-ES	Equal Short Slip-ons for 03-05 Vegas and Kingpin	\$ 498.00
VVGSE04-S	Staggered Slip-ons for 03-05 Vegas and Kingpin	\$ 498.00
VVGSE06	Shot gun Exhaust for all models	Target price \$ 600.00
VVGEB06	Vegas / Kingpin Exhaust Bracket	\$ 74.00
VHMEB06	Hammer / Jackpot Exhaust Bracket	\$ 74.00
VVGFE06	2 into 1 Exhaust for 100 inch models	Target price \$ 925.00

Windscreens

Tomahawk offers both 17 inch and 21 inch Windscreens with chrome split collar mounting and 3/16-inch acrylic screens to minimize buffeting.

VVGWS04-17	Vegas / Jackpot 17" Windscreen	\$ 449.00
VVGWS04-21	Vegas / Jackpot 21" Windscreen	\$ 449.00
VVKPS04-17	Kingpin / Hammer 17" Windscreen	\$ 449.00
VVKPS04-21	Kingpin / Hammer 21" Windscreen	\$ 449.00

Mirrors

Tomahawk offers replacement mirrors that have LED turn Signals built into the rear of the mirror. These mirrors clean up the forks on any bike.

VVGLM04	Turn Signal Mirrors for all models	\$ 124.00
---------	------------------------------------	-----------

Highway Bars

Tomahawk Highway bars are constructed from 1 1/4" thick walled steel. Their one piece construction off additional strength and protection.

VVGHB04	Vegas / Jackpot Highway Bar	\$ 224.00
VKPHB04	Kingpin / Hammer Highway Bar	\$ 300.00



VVGHB04



VKPWS04-17